

City: Winnetka



Janie Bress
 Broker Associate
 (847) 835-6040
<http://www.janiebress.com>
janie.bress@cbexchange.com



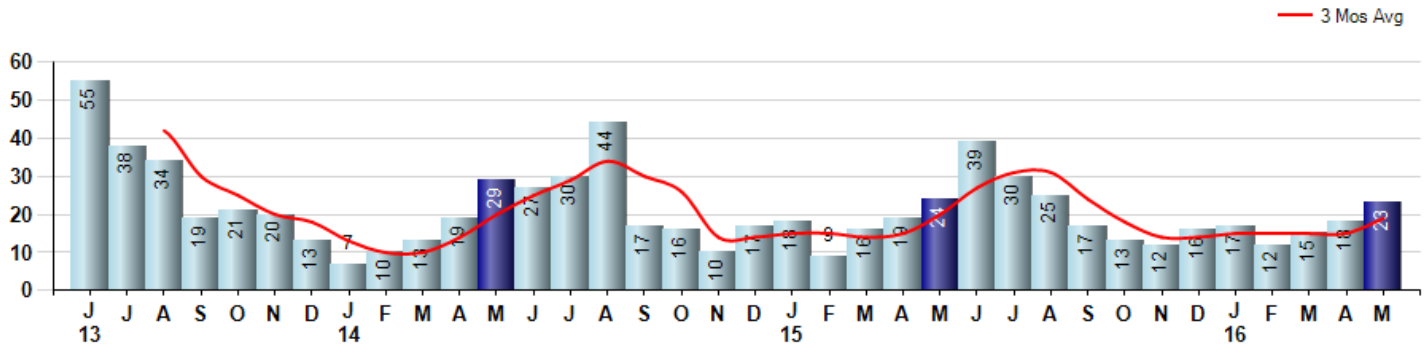
Price Range: \$0 to \$999,999,000 | Properties: Single Family Home, Townhome, Condo

Market Profile & Trends Overview	Month	Trending Versus*:				YTD	Trending Versus*:	
		LM	L3M	PYM	LY		PriorYTD	PriorYear
Median List Price of all Current Listings	\$1,537,000	3%		10%				
Average List Price of all Current Listings	\$1,894,620	7%		3%				
May Median Sales Price	\$1,075,000	-11%	6%	-4%	1%	\$989,000	-15%	-7%
May Average Sales Price	\$1,261,739	-16%	1%	-16%	-4%	\$1,258,357	-5%	-4%
Total Properties Currently for Sale (Inventory)	216	1%		12%				
May Number of Properties Sold	23	28%		-4%				-1%
May Average Days on Market (Solds)	67	-25%	-21%	76%	-17%	98	10%	21%
Asking Price per Square Foot (based on New Listings)	\$393	12%	5%	8%	5%	\$374	-1%	-1%
May Sold Price per Square Foot	\$293	-29%	-10%	-28%	-17%	\$328	-10%	-7%
May Month's Supply of Inventory	9.4	-21%	-17%	17%	-1%	11.2	8%	18%
May Sale Price vs List Price Ratio	93.5%	-1.9%	-1%	-2%	-1.0%	94.3%	0.4%	-0.2%

* LM=Last Month / L3M=Last 3 Months / PYM=Same Month Prior Year / LY=Last Year / YTD = Year-to-date

Property Sales

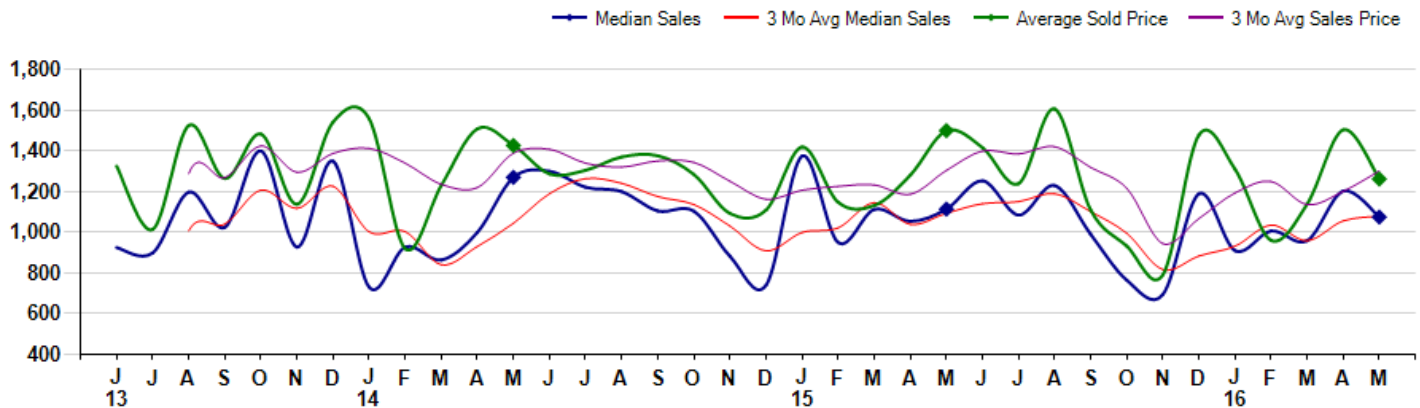
May Property sales were 23, down -4.2% from 24 in May of 2015 and 27.8% higher than the 18 sales last month. May 2016 sales were at their lowest level compared to May of 2015 and 2014. May YTD sales of 85 are running -1.2% behind last year's year-to-date sales of 86.



Prices

The Median Sales Price in May was \$1,075,000, down -3.5% from \$1,114,000 in May of 2015 and down -10.6% from \$1,202,500 last month. The Average Sales Price in May was \$1,261,739, down -15.9% from \$1,499,750 in May of 2015 and down -16.1% from \$1,504,125 last month. May 2016 ASP was at the lowest level compared to May of 2015 and 2014.

Median means Middle (the same # of properties sold above and below Median) (000's)



City: Winnetka



Janie Bress
 Broker Associate
 (847) 835-6040
<http://www.janiebress.com>
janie.bress@cbexchange.com



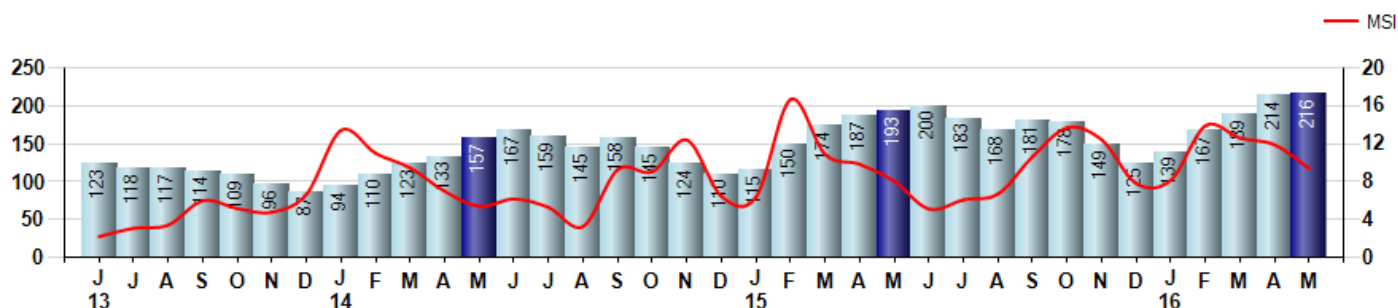
Price Range: \$0 to \$999,999,000 | Properties: Single Family Home, Townhome, Condo

Inventory & MSI

The Total Inventory of Properties available for sale as of May was 216, up 0.9% from 214 last month and up 11.9% from 193 in May of last year. May 2016 Inventory was at highest level compared to May of 2015 and 2014.

A comparatively lower MSI is more beneficial for sellers while a higher MSI is better for buyers. The May 2016 MSI of 9.4 months was at its highest level compared with May of 2015 and 2014.

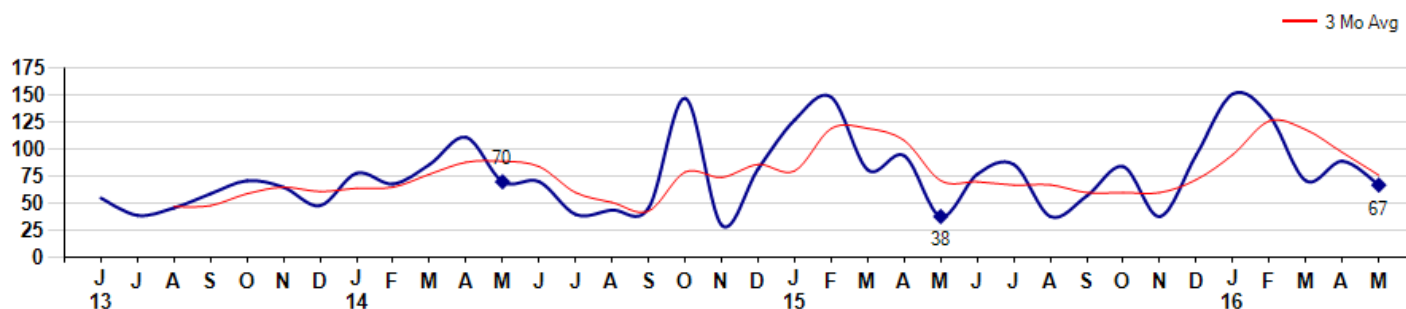
MSI is the # of months needed to sell all of the Inventory at the monthly Sales Pace



Market Time

The average Days On Market(DOM) shows how many days the average Property is on the Market before it sells. An upward trend in DOM tends to indicate a move towards more of a Buyer's market, a downward trend a move towards more of a Seller's market. The DOM for May was 67, down -24.7% from 89 days last month and up 76.3% from 38 days in May of last year. The May 2016 DOM was at a mid range compared with May of 2015 and 2014.

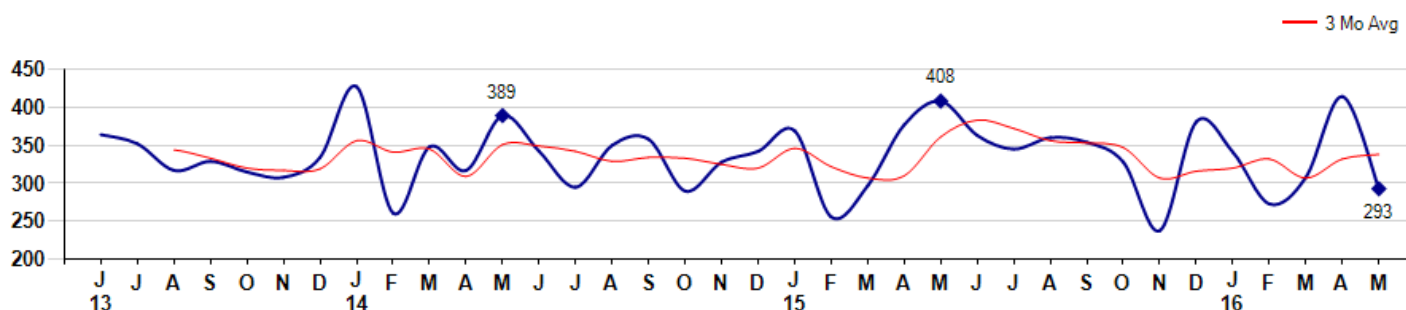
Average Days on Market(Listing to Contract) for properties sold during the month



Selling Price per Square Foot

The Selling Price per Square Foot is a great indicator for the direction of Property values. Since Median Sales Price and Average Sales price can be impacted by the 'mix' of high or low end Properties in the market, the selling price per square foot is a more normalized indicator on the direction of Property values. The May 2016 Selling Price per Square Foot of \$293 was down -29.2% from \$414 last month and down -28.2% from \$408 in May of last year.

Average Selling Price per Square Foot for properties that sold during the month



© 2016 Coldwell Banker Real Estate LLC. All Rights Reserved. Coldwell Banker Residential Brokerage fully supports the principles of the Fair Housing Act and the Equal Opportunity Act. Coldwell Banker Residential Brokerage is operated by a subsidiary of NRT LLC. Coldwell Banker and the Coldwell Banker Logo are registered service marks owned by Coldwell Banker Real Estate LLC.

Based on information from Midwest Real Estate Data LLC for the period 6/1/2013 through 5/31/2016. Due to MLS reporting methods and allowable reporting policy, this data is only informational and may not be completely accurate. Therefore, Coldwell Banker Residential Brokerage does not guarantee the data accuracy. Data maintained by the MLS's may not reflect all real estate activity in the market.



City: Winnetka



Janie Bress
 Broker Associate
 (847) 835-6040
<http://www.janiebress.com>
janie.bress@cbexchange.com

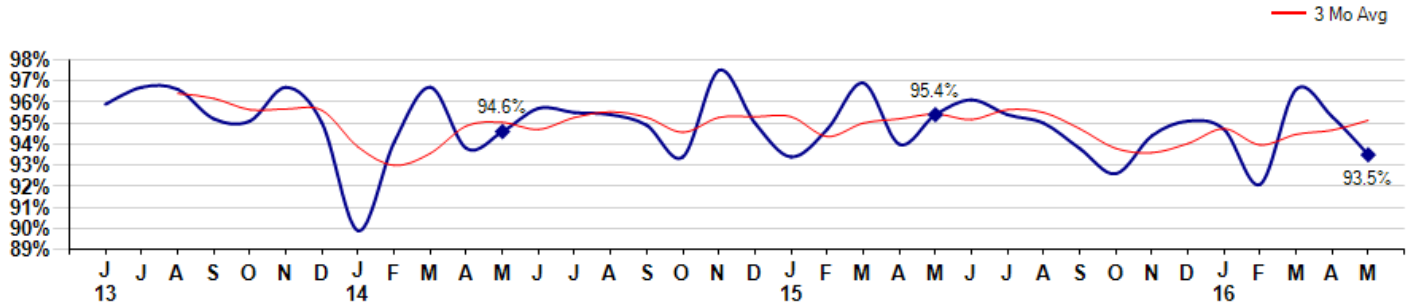


Price Range: \$0 to \$999,999,000 | Properties: Single Family Home, Townhome, Condo

Selling Price vs Listing Price

The Selling Price vs Listing Price reveals the average amount that Sellers are agreeing to come down from their list price. The lower the ratio is below 100% the more of a Buyer's market exists, a ratio at or above 100% indicates more of a Seller's market. The May 2016 Selling Price vs List Price of 93.5% was down from 95.3% last month and down from 95.4% in May of last year.

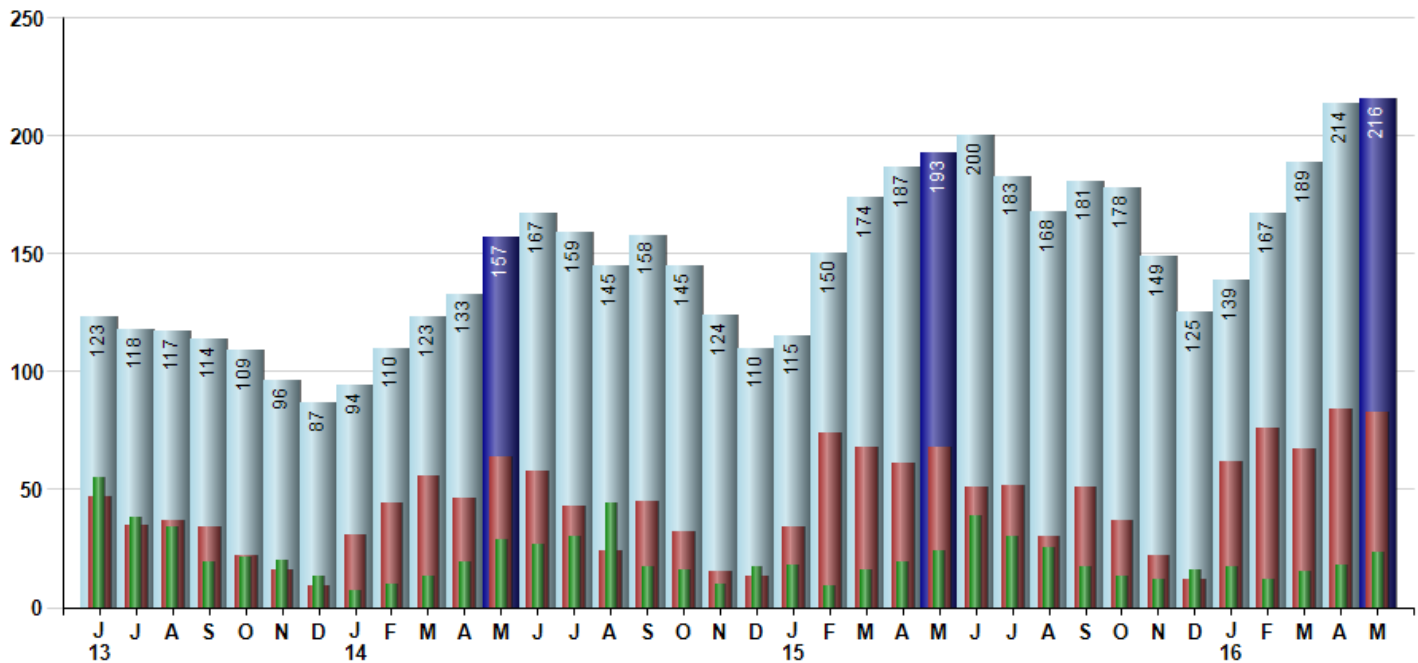
Avg Selling Price divided by Avg Listing Price for sold properties during the month



Inventory / New Listings / Sales

This last view of the market combines monthly inventory of Properties for sale along with New Listings and Sales. The graph shows the basic annual seasonality of the market as well as the relationship between these items. The number of New Listings in May 2016 was 83, down -1.2% from 84 last month and up 22.1% from 68 in May of last year.

Inventory (light blue), New Listings (red), Sold (green)



© 2016 Coldwell Banker Real Estate LLC. All Rights Reserved. Coldwell Banker Residential Brokerage fully supports the principles of the Fair Housing Act and the Equal Opportunity Act. Coldwell Banker Residential Brokerage is operated by a subsidiary of NRT LLC. Coldwell Banker and the Coldwell Banker Logo are registered service marks owned by Coldwell Banker Real Estate LLC.

Based on information from Midwest Real Estate Data LLC for the period 6/1/2013 through 5/31/2016. Due to MLS reporting methods and allowable reporting policy, this data is only informational and may not be completely accurate. Therefore, Coldwell Banker Residential Brokerage does not guarantee the data accuracy. Data maintained by the MLS's may not reflect all real estate activity in the market.



MARKET ACTION REPORT

May 2016

City: *Winnetka*



Janie Bress
 Broker Associate
 (847) 835-6040
<http://www.janiebress.com>
janie.bress@cbexchange.com



Price Range: \$0 to \$999,999,000 | Properties: Single Family Home, Townhome, Condo

	J 13	J	A	S	O	N	D	J 14	F	M	A	M	J	J	A	S	O	N	D	J 15	F	M	A	M	J	J	A	S	O	N	D	J 16	F	M	A	M
Homes Sold	55	38	34	19	21	20	13	7	10	13	19	29	27	30	44	17	16	10	17	18	9	16	19	24	39	30	25	17	13	12	16	17	12	15	18	23
3 Mo. Roll Avg			42	30	25	20	18	13	10	10	14	20	25	29	34	30	26	14	14	15	15	14	15	20	27	31	31	24	18	14	14	15	15	15	19	

(000's)	J 13	J	A	S	O	N	D	J 14	F	M	A	M	J	J	A	S	O	N	D	J 15	F	M	A	M	J	J	A	S	O	N	D	J 16	F	M	A	M
Median Sale Price	925	899	1,198	1,025	1,400	928	1,350	730	928	864	1,000	1,270	1,300	1,222	1,200	1,105	1,104	883	740	1,375	950	1,113	1,054	1,114	1,254	1,085	1,230	990	765	695	1,190	910	1,007	959	1,203	1,075
3 Mo. Roll Avg			1,007	1,040	1,208	1,118	1,226	1,003	1,003	841	931	1,045	1,190	1,264	1,241	1,176	1,136	1,031	909	999	1,022	1,146	1,039	1,094	1,141	1,151	1,189	1,102	995	817	883	932	1,036	959	1,056	1,079

	J 13	J	A	S	O	N	D	J 14	F	M	A	M	J	J	A	S	O	N	D	J 15	F	M	A	M	J	J	A	S	O	N	D	J 16	F	M	A	M
Inventory	123	118	117	114	109	96	87	94	110	123	133	157	167	159	145	158	145	124	110	115	150	174	187	193	200	183	168	181	178	149	125	139	167	189	214	216
MSI	2	3	3	6	5	5	7	13	11	9	7	5	6	5	3	9	9	12	6	6	17	11	10	8	5	6	7	11	14	12	8	8	14	13	12	9

	J 13	J	A	S	O	N	D	J 14	F	M	A	M	J	J	A	S	O	N	D	J 15	F	M	A	M	J	J	A	S	O	N	D	J 16	F	M	A	M
Days On Market	55	39	46	59	71	65	48	78	68	86	111	70	70	40	44	46	147	30	82	127	148	81	94	38	77	86	38	57	84	38	95	151	131	71	89	67
3 Mo. Roll Avg			47	48	59	65	61	64	65	77	88	89	84	60	51	43	79	74	86	80	119	119	108	71	70	67	67	60	60	60	72	95	126	118	97	76

	J 13	J	A	S	O	N	D	J 14	F	M	A	M	J	J	A	S	O	N	D	J 15	F	M	A	M	J	J	A	S	O	N	D	J 16	F	M	A	M
Price per Sq Ft	364	352	317	329	315	308	334	427	261	348	317	389	342	295	350	358	290	328	342	369	256	297	377	408	363	345	360	354	328	238	381	341	273	308	414	293
3 Mo. Roll Avg			344	333	320	317	319	356	341	345	309	351	349	342	329	334	333	325	320	346	322	307	310	361	383	372	356	353	347	307	316	320	332	307	332	338

	J 13	J	A	S	O	N	D	J 14	F	M	A	M	J	J	A	S	O	N	D	J 15	F	M	A	M	J	J	A	S	O	N	D	J 16	F	M	A	M
Sale to List Price	0.959	0.967	0.966	0.952	0.951	0.967	0.950	0.899	0.941	0.967	0.938	0.946	0.957	0.955	0.954	0.949	0.934	0.975	0.950	0.934	0.947	0.969	0.940	0.954	0.961	0.954	0.950	0.938	0.926	0.944	0.951	0.947	0.921	0.966	0.953	0.935
3 Mo. Roll Avg			0.964	0.962	0.956	0.957	0.956	0.939	0.930	0.936	0.949	0.950	0.947	0.953	0.955	0.953	0.946	0.953	0.953	0.953	0.944	0.950	0.952	0.954	0.952	0.956	0.955	0.947	0.938	0.936	0.940	0.947	0.940	0.945	0.947	0.951

	J 13	J	A	S	O	N	D	J 14	F	M	A	M	J	J	A	S	O	N	D	J 15	F	M	A	M	J	J	A	S	O	N	D	J 16	F	M	A	M
New Listings	47	35	37	34	22	16	9	31	44	56	46	64	58	43	24	45	32	15	13	34	74	68	61	68	51	52	30	51	37	22	12	62	76	67	84	83
Inventory	123	118	117	114	109	96	87	94	110	123	133	157	167	159	145	158	145	124	110	115	150	174	187	193	200	183	168	181	178	149	125	139	167	189	214	216
Sales	55	38	34	19	21	20	13	7	10	13	19	29	27	30	44	17	16	10	17	18	9	16	19	24	39	30	25	17	13	12	16	17	12	15	18	23

(000's)	J 13	J	A	S	O	N	D	J 14	F	M	A	M	J	J	A	S	O	N	D	J 15	F	M	A	M	J	J	A	S	O	N	D	J 16	F	M	A	M
Avg Sale Price	1,325	1,014	1,526	1,264	1,483	1,138	1,542	1,558	919	1,231	1,509	1,427	1,287	1,305	1,370	1,376	1,284	1,093	1,110	1,419	1,148	1,131	1,281	1,500	1,416	1,239	1,607	1,110	932	791	1,479	1,310	960	1,139	1,504	1,262
3 Mo. Roll Avg			1,288	1,268	1,424	1,295	1,387	1,412	1,340	1,236	1,219	1,389	1,407	1,339	1,321	1,351	1,344	1,251	1,162	1,207	1,226	1,233	1,187	1,304	1,399	1,385	1,421	1,319	1,216	944	1,068	1,193	1,250	1,136	1,201	1,302

© 2016 Coldwell Banker Real Estate LLC. All Rights Reserved. Coldwell Banker Residential Brokerage fully supports the principles of the Fair Housing Act and the Equal Opportunity Act. Coldwell Banker Residential Brokerage is operated by a subsidiary of NRT LLC. Coldwell Banker and the Coldwell Banker Logo are registered service marks owned by Coldwell Banker Real Estate LLC.

Based on information from Midwest Real Estate Data LLC for the period 6/1/2013 through 5/31/2016. Due to MLS reporting methods and allowable reporting policy, this data is only informational and may not be completely accurate. Therefore, Coldwell Banker Residential Brokerage does not guarantee the data accuracy. Data maintained by the MLS's may not reflect all real estate activity in the market.

