

City: Highland Park



Janie Bress
 Broker Associate
 (847) 835-6040
<http://www.janiebress.com>
janie.bress@cbexchange.com



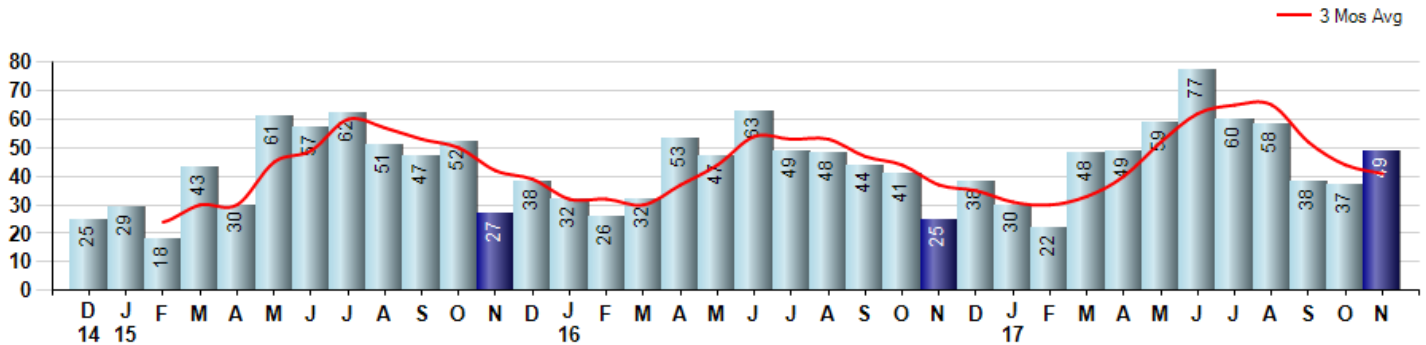
Price Range: 0 to 999999999 | Properties: Single Family Home, Townhome, Condo

Market Profile & Trends Overview	Month	Trending Versus*:				YTD	Trending Versus*:	
		LM	L3M	PYM	LY		PriorYTD	PriorYear
Median List Price of all Current Listings	\$675,990	-2%		0%				
Average List Price of all Current Listings	\$978,862	0%		10%				
November Median Sales Price	\$420,000	-10%	-9%	-13%	-15%	\$470,000	-6%	-5%
November Average Sales Price	\$460,528	-28%	-17%	-31%	-20%	\$565,200	-2%	-2%
Total Properties Currently for Sale (Inventory)	295	-9%		-9%				
November Number of Properties Sold	49	32%		96%			15%	
November Average Days on Market (Solds)	72	0%	0%	-10%	-1%	77	6%	6%
Asking Price per Square Foot (based on New Listings)	\$231	-3%	-1%	-11%	-5%	\$233	-5%	-4%
November Sold Price per Square Foot	\$196	-20%	-7%	-10%	-5%	\$208	-1%	1%
November Month's Supply of Inventory	6.0	-32%	-26%	-54%	-28%	7.8	-8%	-7%
November Sale Price vs List Price Ratio	90.4%	-2.8%	-1%	4%	-0.9%	91.4%	-0.1%	0.1%

* LM=Last Month / L3M=Last 3 Months / PYM=Same Month Prior Year / LY=Last Year / YTD = Year-to-date

Property Sales

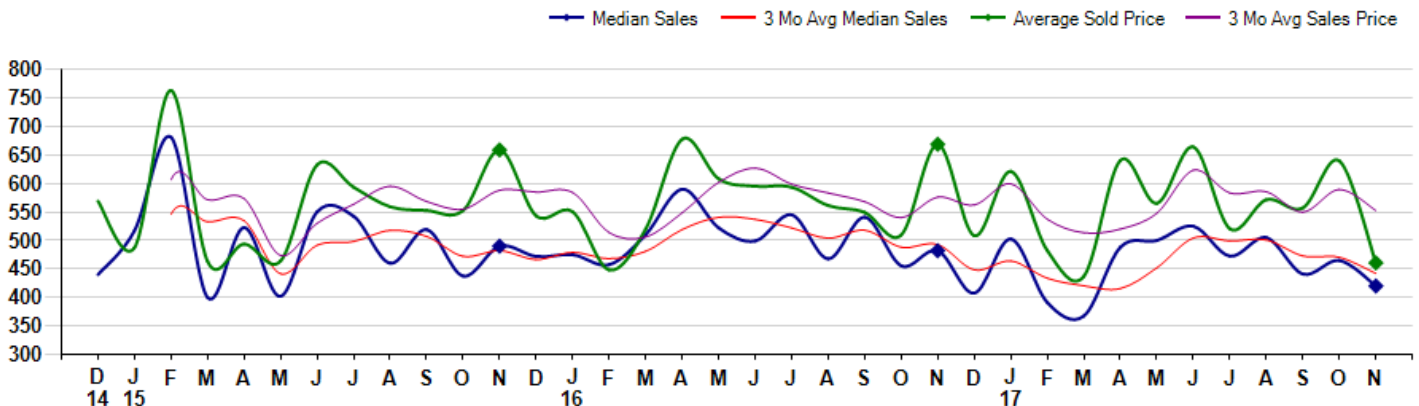
November Property sales were 49, up 96.0% from 25 in November of 2016 and 32.4% higher than the 37 sales last month. November 2017 sales were at their highest level compared to November of 2016 and 2015. November YTD sales of 527 are running 14.6% ahead of last year's year-to-date sales of 460.



Prices

The Median Sales Price in November was \$420,000, down -12.9% from \$482,000 in November of 2016 and down -9.7% from \$465,000 last month. The Average Sales Price in November was \$460,528, down -31.1% from \$668,759 in November of 2016 and down -28.0% from \$639,643 last month. November 2017 ASP was at the lowest level compared to November of 2016 and 2015.

Median means Middle (the same # of properties sold above and below Median) (000's)



City: Highland Park



Janie Bress
 Broker Associate
 (847) 835-6040
<http://www.janiebress.com>
janie.bress@cbexchange.com



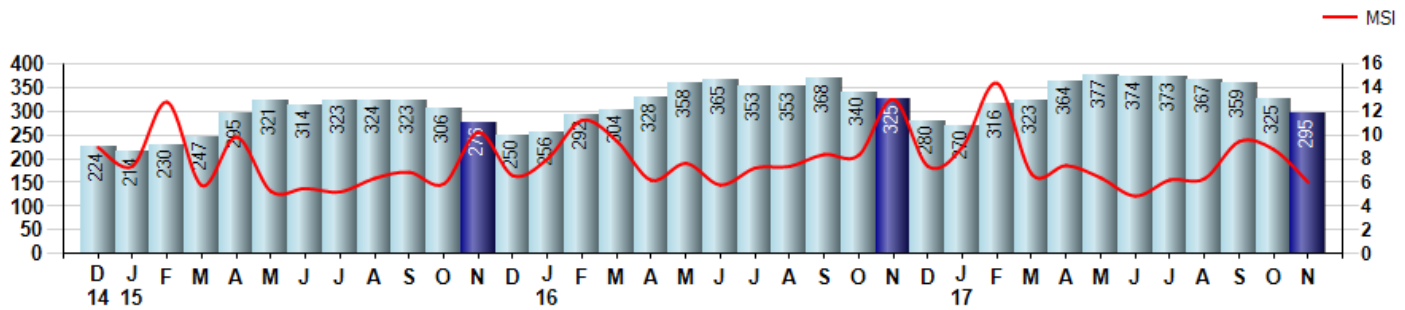
Price Range: 0 to 999999999 | Properties: Single Family Home, Townhome, Condo

Inventory & MSI

The Total Inventory of Properties available for sale as of November was 295, down -9.2% from 325 last month and down -9.2% from 325 in November of last year. November 2017 Inventory was at a mid range compared to November of 2016 and 2015.

A comparatively lower MSI is more beneficial for sellers while a higher MSI is better for buyers. The November 2017 MSI of 6.0 months was at its lowest level compared with November of 2016 and 2015.

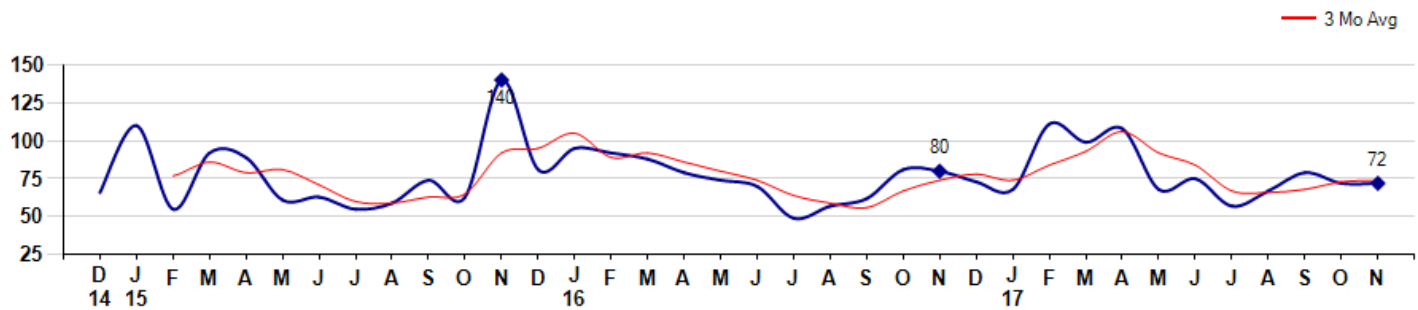
MSI is the # of months needed to sell all of the Inventory at the monthly Sales Pace



Market Time

The average Days On Market (DOM) shows how many days the average Property is on the Market before it sells. An upward trend in DOM tends to indicate a move towards more of a Buyer's market, a downward trend a move towards more of a Seller's market. The DOM for November was 72, equal to 72 days last month and down -10.0% from 80 days in November of last year. The November 2017 DOM was at its lowest level compared with November of 2016 and 2015.

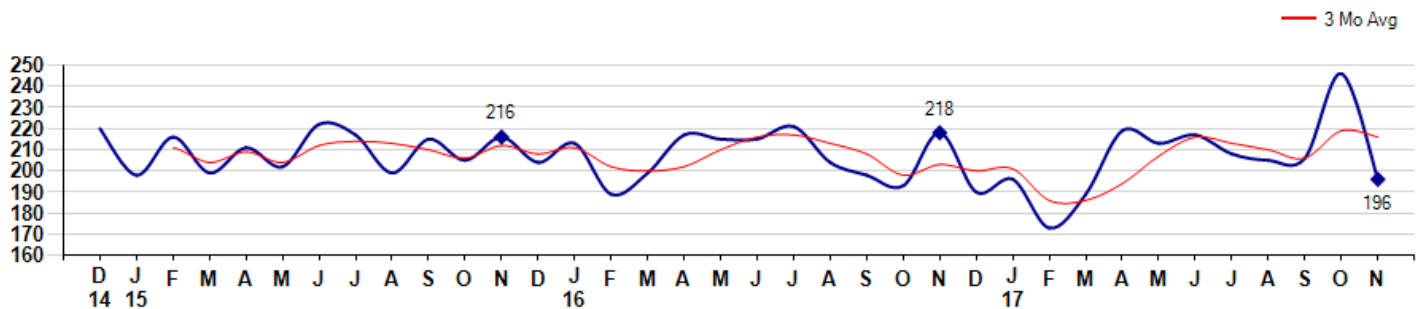
Average Days on Market (Listing to Contract) for properties sold during the month



Selling Price per Square Foot

The Selling Price per Square Foot is a great indicator for the direction of Property values. Since Median Sales Price and Average Sales price can be impacted by the 'mix' of high or low end Properties in the market, the selling price per square foot is a more normalized indicator on the direction of Property values. The November 2017 Selling Price per Square Foot of \$196 was down -20.3% from \$246 last month and down -10.1% from \$218 in November of last year.

Average Selling Price per Square Foot for properties that sold during the month



City: Highland Park



Janie Bress
 Broker Associate
 (847) 835-6040
<http://www.janiebress.com>
janie.bress@cbexchange.com

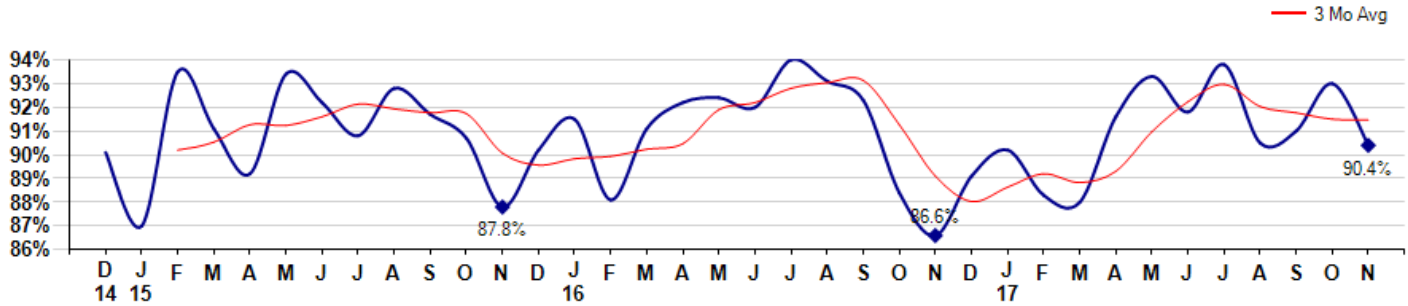


Price Range: 0 to 999999999 | Properties: Single Family Home, Townhome, Condo

Selling Price vs Listing Price

The Selling Price vs Listing Price reveals the average amount that Sellers are agreeing to come down from their list price. The lower the ratio is below 100% the more of a Buyer's market exists, a ratio at or above 100% indicates more of a Seller's market. The November 2017 Selling Price vs List Price of 90.4% was down from 93.0% last month and up from 86.6% in November of last year.

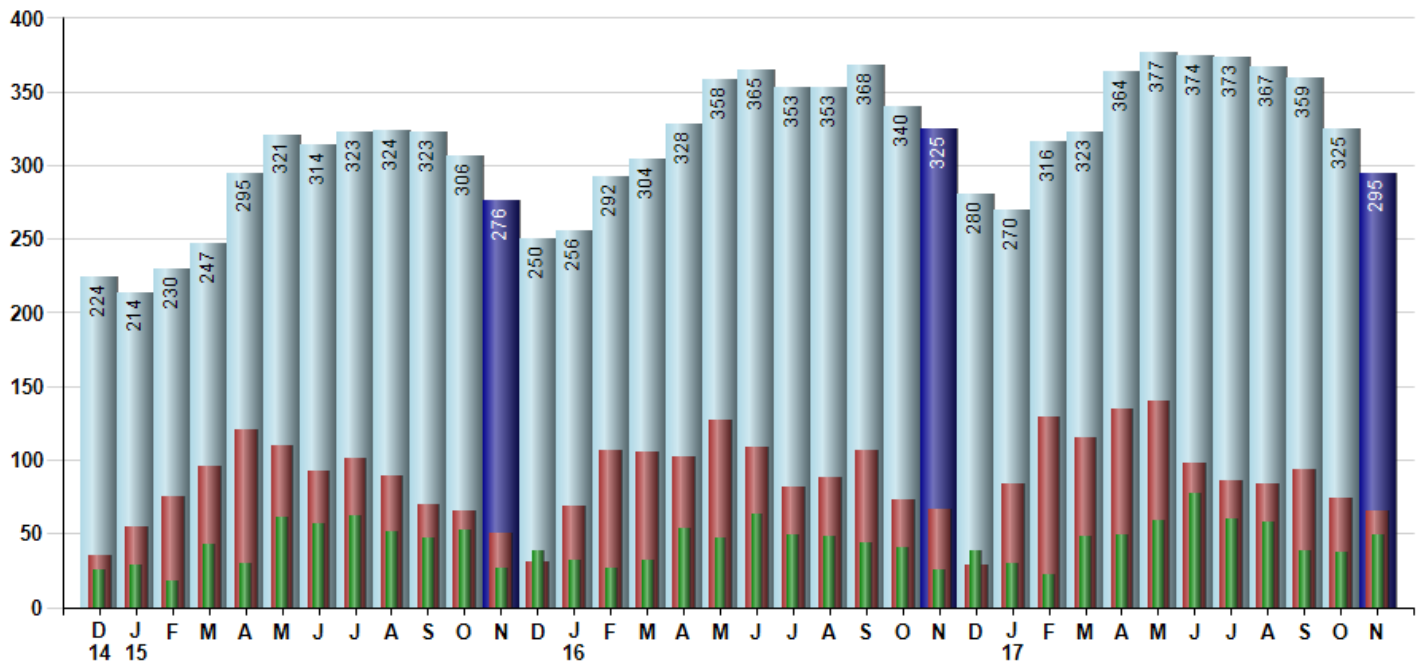
Avg Selling Price divided by Avg Listing Price for sold properties during the month



Inventory / New Listings / Sales

This last view of the market combines monthly inventory of Properties for sale along with New Listings and Sales. The graph shows the basic annual seasonality of the market as well as the relationship between these items. The number of New Listings in November 2017 was 65, down -12.2% from 74 last month and down -3.0% from 67 in November of last year.

Inventory (light blue), New Listings (red), Sold (green)



© 2017 Coldwell Banker Residential Brokerage. All Rights Reserved. Coldwell Banker Residential Brokerage fully supports the principles of the Fair Housing Act and the Equal Opportunity Act. Coldwell Banker Residential Brokerage is operated by a subsidiary of NRT LLC. Coldwell Banker and the Coldwell Banker Logo are registered service marks owned by Coldwell Banker Real Estate LLC.

Based on information from Midwest Real Estate Data LLC for the period 12/1/2014 through 11/30/2017. Due to MLS reporting methods and allowable reporting policy, this data is only informational and may not be completely accurate. Therefore, Coldwell Banker Residential Brokerage does not guarantee the data accuracy. Data maintained by the MLS's may not reflect all real estate activity in the market.



MARKET ACTION REPORT

November 2017

City: Highland Park



Janie Bress
 Broker Associate
 (847) 835-6040
<http://www.janiebress.com>
janie.bress@cbexchange.com



Price Range: 0 to 999999999 | Properties: Single Family Home, Townhome, Condo

	D 14	J 15	F	M	A	M	J	J	A	S	O	N	D	J 16	F	M	A	M	J	J	A	S	O	N	D	J 17	F	M	A	M	J	J	A	S	O	N
Homes Sold	25	29	18	43	30	61	57	62	51	47	52	27	38	32	26	32	53	47	63	49	48	44	41	25	38	30	22	48	49	59	77	60	58	38	37	49
3 Mo. Roll Avg			24	30	30	45	49	60	57	53	50	42	39	32	32	30	37	44	54	53	53	47	44	37	35	31	30	33	40	52	62	65	65	52	44	41

(000's)	D 14	J 15	F	M	A	M	J	J	A	S	O	N	D	J 16	F	M	A	M	J	J	A	S	O	N	D	J 17	F	M	A	M	J	J	A	S	O	N
Median Sale Price	440	517	681	400	523	402	550	543	460	519	438	490	472	475	458	510	590	522	499	545	468	541	456	482	408	503	391	368	488	500	525	473	505	441	465	420
3 Mo. Roll Avg			546	533	535	442	492	498	518	507	472	482	466	479	468	481	519	541	537	522	504	518	488	493	448	464	434	420	416	452	504	499	501	473	470	442

	D 14	J 15	F	M	A	M	J	J	A	S	O	N	D	J 16	F	M	A	M	J	J	A	S	O	N	D	J 17	F	M	A	M	J	J	A	S	O	N
Inventory	224	214	230	247	295	321	314	323	324	323	306	276	250	256	292	304	328	358	365	353	353	368	340	325	280	270	316	323	364	377	374	373	367	359	325	295
MSI	9	7	13	6	10	5	6	5	6	7	6	10	7	8	11	10	6	8	6	7	7	8	8	13	7	9	14	7	7	6	5	6	6	9	9	6

	D 14	J 15	F	M	A	M	J	J	A	S	O	N	D	J 16	F	M	A	M	J	J	A	S	O	N	D	J 17	F	M	A	M	J	J	A	S	O	N
Days On Market	66	110	55	92	89	61	63	55	59	74	63	140	81	95	92	88	79	74	70	49	57	62	81	80	73	68	111	99	108	68	75	57	67	79	72	72
3 Mo. Roll Avg			77	86	79	81	71	60	59	63	65	92	95	105	89	92	86	80	74	64	59	56	67	74	78	74	84	93	106	92	84	67	66	68	73	74

	D 14	J 15	F	M	A	M	J	J	A	S	O	N	D	J 16	F	M	A	M	J	J	A	S	O	N	D	J 17	F	M	A	M	J	J	A	S	O	N
Price per Sq Ft	220	198	216	199	211	202	222	217	199	215	205	216	204	213	189	199	217	215	215	221	204	198	193	218	190	196	173	189	219	213	217	208	205	206	246	196
3 Mo. Roll Avg			211	204	209	204	212	214	213	210	206	212	208	211	202	200	202	210	216	217	213	208	198	203	200	201	186	186	194	207	216	213	210	206	219	216

	D 14	J 15	F	M	A	M	J	J	A	S	O	N	D	J 16	F	M	A	M	J	J	A	S	O	N	D	J 17	F	M	A	M	J	J	A	S	O	N
Sale to List Price	0.901	0.870	0.935	0.911	0.892	0.934	0.922	0.908	0.928	0.917	0.907	0.878	0.902	0.915	0.881	0.911	0.922	0.924	0.920	0.940	0.931	0.923	0.884	0.866	0.891	0.902	0.883	0.880	0.916	0.933	0.918	0.938	0.905	0.910	0.930	0.904
3 Mo. Roll Avg			0.902	0.905	0.913	0.912	0.916	0.921	0.919	0.918	0.917	0.901	0.896	0.898	0.899	0.902	0.905	0.919	0.922	0.928	0.930	0.931	0.913	0.891	0.880	0.886	0.892	0.888	0.893	0.910	0.922	0.930	0.920	0.918	0.915	0.915

	D 14	J 15	F	M	A	M	J	J	A	S	O	N	D	J 16	F	M	A	M	J	J	A	S	O	N	D	J 17	F	M	A	M	J	J	A	S	O	N
New Listings	35	55	75	96	121	110	92	101	89	70	65	50	31	69	106	105	102	127	109	82	88	107	73	67	29	84	129	115	135	140	98	86	84	93	74	65
Inventory	224	214	230	247	295	321	314	323	324	323	306	276	250	256	292	304	328	358	365	353	353	368	340	325	280	270	316	323	364	377	374	373	367	359	325	295
Sales	25	29	18	43	30	61	57	62	51	47	52	27	38	32	26	32	53	47	63	49	48	44	41	25	38	30	22	48	49	59	77	60	58	38	37	49

(000's)	D 14	J 15	F	M	A	M	J	J	A	S	O	N	D	J 16	F	M	A	M	J	J	A	S	O	N	D	J 17	F	M	A	M	J	J	A	S	O	N
Avg Sale Price	569	487	763	463	494	464	633	593	559	553	553	659	543	550	448	520	678	608	595	594	561	549	510	669	508	621	482	437	641	565	664	521	572	557	640	461
3 Mo. Roll Avg			607	571	573	474	530	563	595	568	555	588	585	584	514	506	549	602	627	599	583	568	540	576	562	599	537	513	520	548	623	583	585	550	589	552

© 2017 Coldwell Banker Residential Brokerage. All Rights Reserved. Coldwell Banker Residential Brokerage fully supports the principles of the Fair Housing Act and the Equal Opportunity Act. Coldwell Banker Residential Brokerage is operated by a subsidiary of NRT LLC. Coldwell Banker and the Coldwell Banker Logo are registered service marks owned by Coldwell Banker Real Estate LLC.

Based on information from Midwest Real Estate Data LLC for the period 12/1/2014 through 11/30/2017. Due to MLS reporting methods and allowable reporting policy, this data is only informational and may not be completely accurate. Therefore, Coldwell Banker Residential Brokerage does not guarantee the data accuracy. Data maintained by the MLS's may not reflect all real estate activity in the market.

