

# City: Deerfield


**Janie Bress**

Broker Associate

(847) 835-6040

<http://www.janiebress.com>
[janie.bress@cbexchange.com](mailto:janie.bress@cbexchange.com)

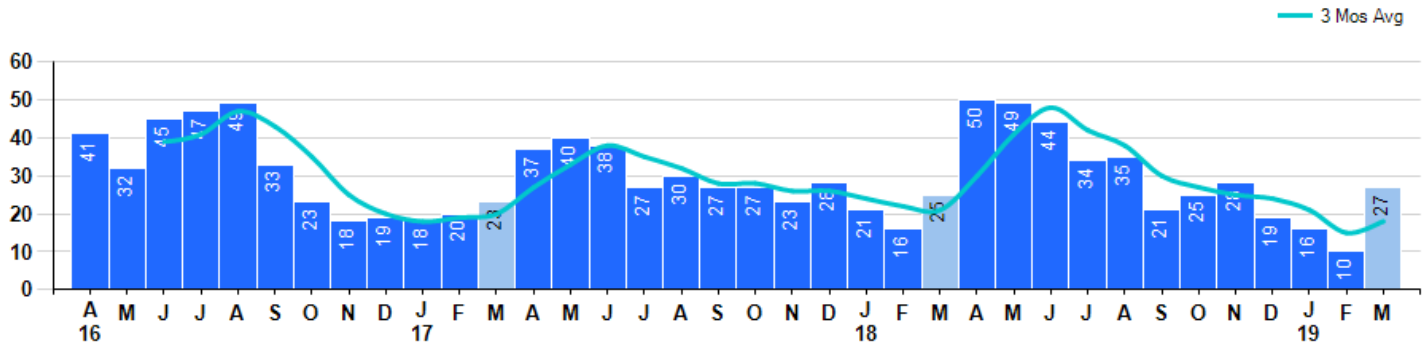
Price Range: 0 to 999999999 | Properties: Single Family Home, Townhome, Condo

| Market Profile & Trends Overview                     | Month     | Trending Versus*: |      |      |      | YTD       | Trending Versus*: |           |
|--|-----------|-------------------|------|------|------|-----------|-------------------|-----------|
|  |           | LM                | L3M  | PYM  | LY   |           | PriorYTD          | PriorYear |
| Median List Price of all Current Listings            | \$517,000 | -2%               |      | -6%  |      |           |                   |           |
| Average List Price of all Current Listings           | \$579,032 | -3%               |      | -8%  |      |           |                   |           |
| March Median Sales Price                             | \$470,000 | 23%               | 6%   | 1%   | 9%   | \$445,000 | 5%                | 3%        |
| March Average Sales Price                            | \$502,065 | 25%               | 14%  | 6%   | 6%   | \$449,744 | -4%               | -5%       |
| Total Properties Currently for Sale (Inventory)      | 160       | 1%                |      | 2%   |      |           |                   |           |
| March Number of Properties Sold                      | 27        | 170%              |      | 8%   |      |           | -15%              |           |
| March Average Days on Market (Solds)                 | 37        | -39%              | -45% | -40% | -37% | 63        | -3%               | 7%        |
| Asking Price per Square Foot (based on New Listings) | \$208     | -3%               | 0%   | -5%  | -1%  | \$209     | -2%               | -1%       |
| March Sold Price per Square Foot                     | \$198     | -2%               | 3%   | 2%   | 2%   | \$199     | 4%                | 2%        |
| March Month's Supply of Inventory                    | 5.9       | -63%              | -40% | -6%  | 3%   | 9.9       | 33%               | 73%       |
| March Sale Price vs List Price Ratio                 | 96.8%     | 1.9%              | 4%   | 3%   | 3.8% | 95.0%     | 1.5%              | 1.9%      |

\* LM=Last Month / L3M=Last 3 Months / PYM=Same Month Prior Year / LY=Last Year / YTD = Year-to-date

## Property Sales

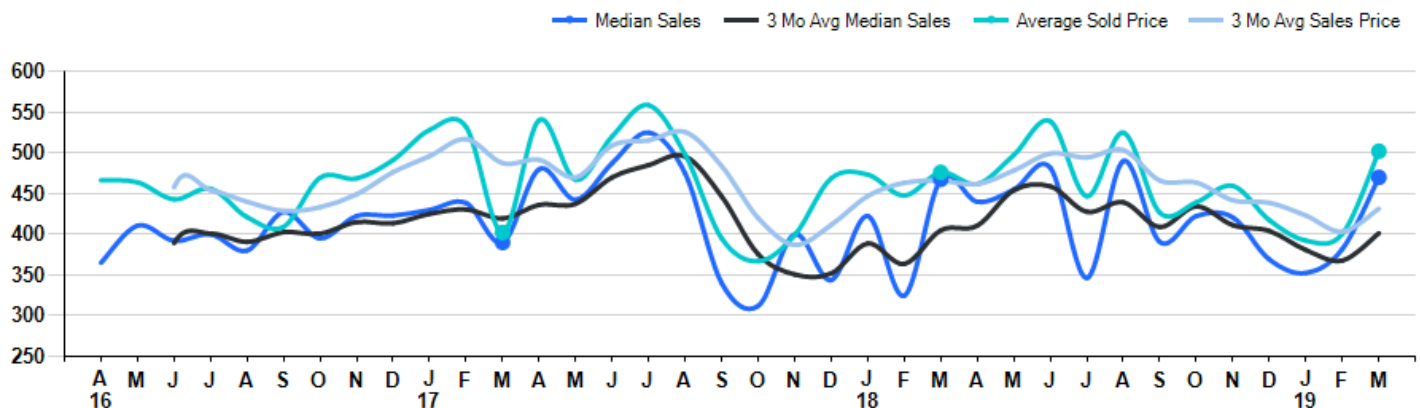
March Property sales were 27, up 8.0% from 25 in March of 2018 and 170.0% higher than the 10 sales last month. March 2019 sales were at their highest level compared to March of 2018 and 2017. March YTD sales of 53 are running -14.5% behind last year's year-to-date sales of 62.



## Prices

The Median Sales Price in March was \$470,000, up 0.5% from \$467,500 in March of 2018 and up 23.0% from \$382,000 last month. The Average Sales Price in March was \$502,065, up 5.5% from \$476,040 in March of 2018 and up 25.4% from \$400,460 last month. March 2019 ASP was at highest level compared to March of 2018 and 2017.

Median means Middle (the same # of properties sold above and below Median) (000's)



# City: Deerfield



**Janie Bress**  
Broker Associate  
(847) 835-6040  
<http://www.janiebress.com>  
[janie.bress@cbexchange.com](mailto:janie.bress@cbexchange.com)

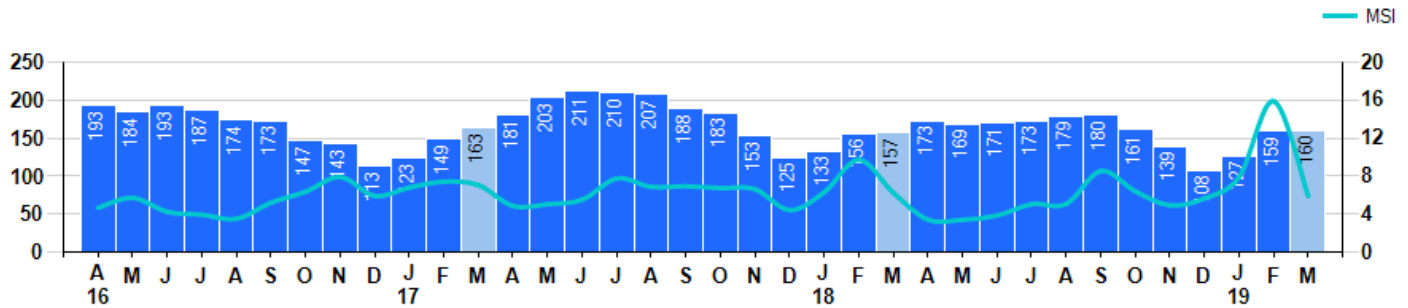
Price Range: 0 to 999999999 | Properties: Single Family Home, Townhome, Condo

## Inventory & MSI

The Total Inventory of Properties available for sale as of March was 160, up 0.6% from 159 last month and up 1.9% from 157 in March of last year. March 2019 Inventory was at a mid range compared to March of 2018 and 2017.

A comparatively lower MSI is more beneficial for sellers while a higher MSI is better for buyers. The March 2019 MSI of 5.9 months was at its lowest level compared with March of 2018 and 2017.

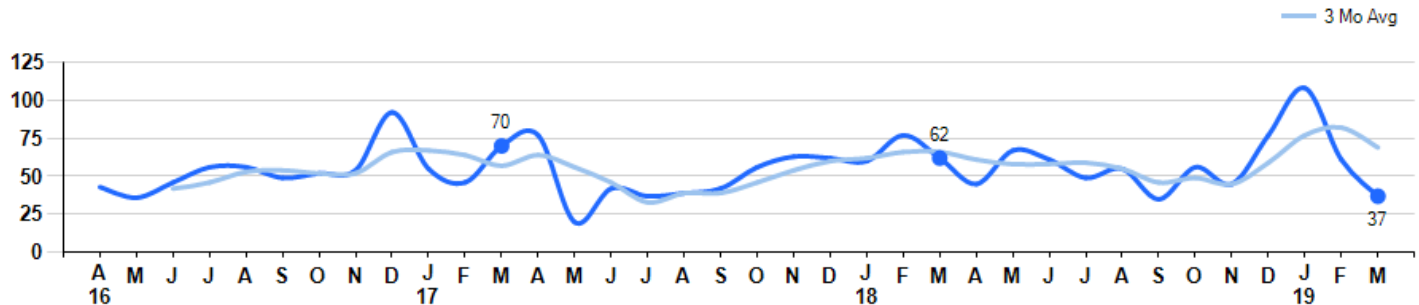
MSI is the # of months needed to sell all of the Inventory at the monthly Sales Pace



## Market Time

The average Days On Market(DOM) shows how many days the average Property is on the Market before it sells. An upward trend in DOM tends to indicate a move towards more of a Buyer's market, a downward trend a move towards more of a Seller's market. The DOM for March was 37, down -39.3% from 61 days last month and down -40.3% from 62 days in March of last year. The March 2019 DOM was at its lowest level compared with March of 2018 and 2017.

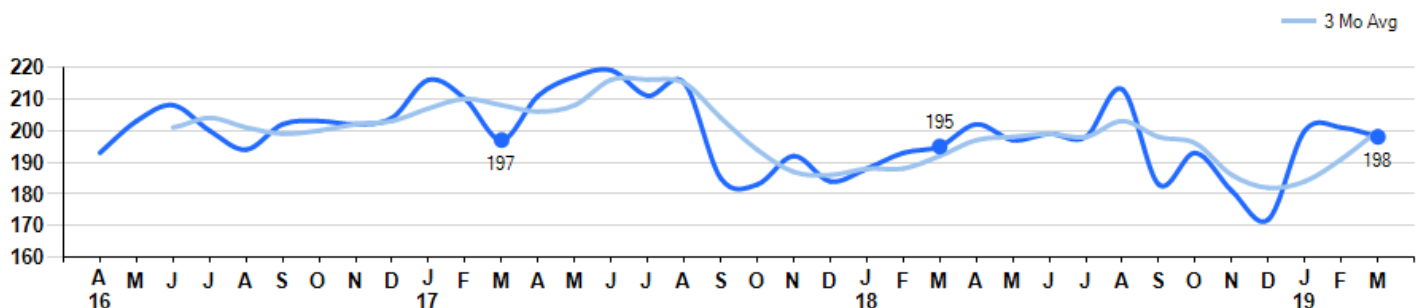
Average Days on Market(Listing to Contract) for properties sold during the month



## Selling Price per Square Foot

The Selling Price per Square Foot is a great indicator for the direction of Property values. Since Median Sales Price and Average Sales price can be impacted by the 'mix' of high or low end Properties in the market, the selling price per square foot is a more normalized indicator on the direction of Property values. The March 2019 Selling Price per Square Foot of \$198 was down -1.5% from \$201 last month and up 1.5% from \$195 in March of last year.

Average Selling Price per Square Foot for properties that sold during the month





# City: Deerfield



**Janie Bress**

Broker Associate

(847) 835-6040

<http://www.janiebress.com>

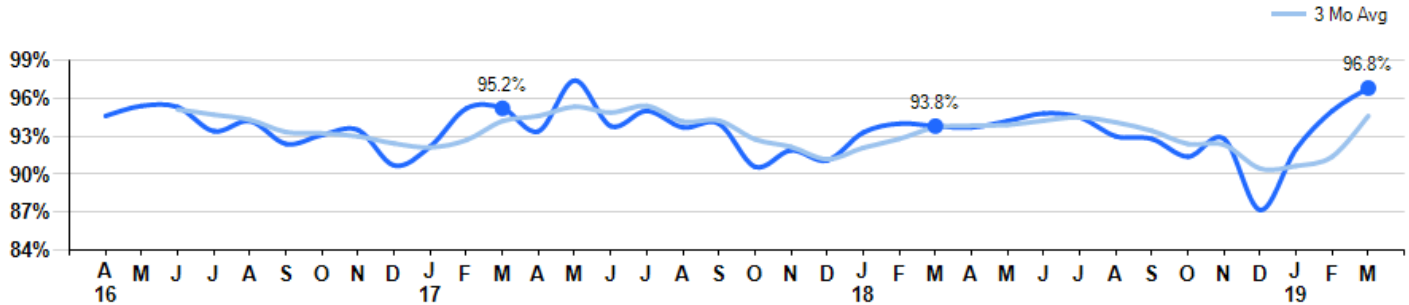
[janie.bress@cbexchange.com](mailto:janie.bress@cbexchange.com)

Price Range: 0 to 999999999 | Properties: Single Family Home, Townhome, Condo

## Selling Price vs Listing Price

The Selling Price vs Listing Price reveals the average amount that Sellers are agreeing to come down from their list price. The lower the ratio is below 100% the more of a Buyer's market exists, a ratio at or above 100% indicates more of a Seller's market. The March 2019 Selling Price vs List Price of 96.8% was up from 95.0% last month and up from 93.8% in March of last year.

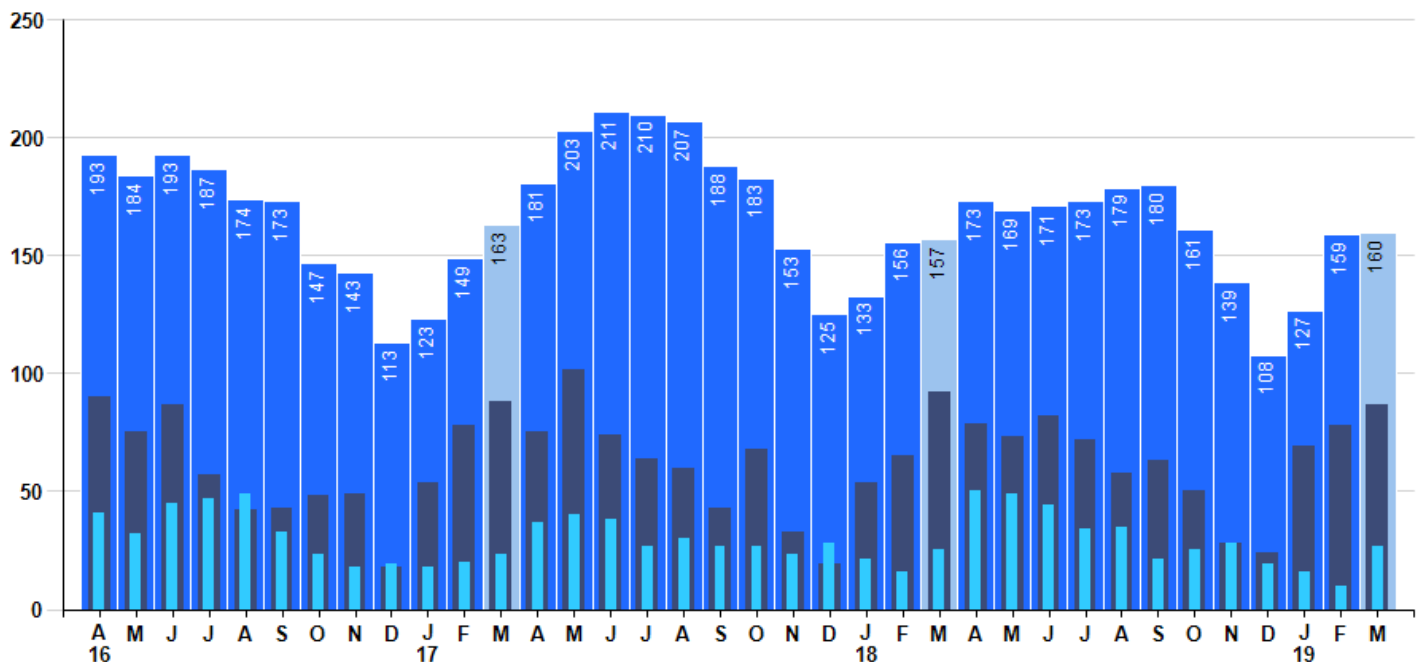
Avg Selling Price divided by Avg Listing Price for sold properties during the month



## Inventory / New Listings / Sales

This last view of the market combines monthly inventory of Properties for sale along with New Listings and Sales. The graph shows the basic annual seasonality of the market as well as the relationship between these items. The number of New Listings in March 2019 was 87, up 11.5% from 78 last month and down -5.4% from 92 in March of last year.

Inventory New Listings Sold



# City: Deerfield


**Janie Bress**

Broker Associate

(847) 835-6040

<http://www.janiebress.com>
[janie.bress@cbexchange.com](mailto:janie.bress@cbexchange.com)

Price Range: 0 to 999999999 | Properties: Single Family Home, Townhome, Condo

|                | A 16 | M  | J  | J  | A  | S  | O  | N  | D  | J 17 | F  | M  | A  | M  | J  | J  | A  | S  | O  | N  | D  | J 18 | F  | M  | A  | M  | J  | J  | A  | S  | O  | N  | D  | J 19 | F  | M  |
|----------------|------|----|----|----|----|----|----|----|----|------|----|----|----|----|----|----|----|----|----|----|----|------|----|----|----|----|----|----|----|----|----|----|----|------|----|----|
| Homes Sold     | 41   | 32 | 45 | 47 | 49 | 33 | 23 | 18 | 19 | 18   | 20 | 23 | 37 | 40 | 38 | 27 | 30 | 27 | 27 | 23 | 28 | 21   | 16 | 25 | 50 | 49 | 44 | 34 | 35 | 21 | 25 | 28 | 19 | 16   | 10 | 27 |
| 3 Mo. Roll Avg |      |    | 39 | 41 | 47 | 43 | 35 | 25 | 20 | 18   | 19 | 20 | 27 | 33 | 38 | 35 | 32 | 28 | 28 | 26 | 26 | 24   | 22 | 21 | 30 | 41 | 48 | 42 | 38 | 30 | 27 | 25 | 24 | 21   | 15 | 18 |

| (000's)         | A 16 | M   | J   | J   | A   | S   | O   | N   | D   | J 17 | F   | M   | A   | M   | J   | J   | A   | S   | O   | N   | D   | J 18 | F   | M   | A   | M   | J   | J   | A   | S   | O   | N   | D   | J 19 | F   | M   |
|-----------------|------|-----|-----|-----|-----|-----|-----|-----|-----|------|-----|-----|-----|-----|-----|-----|-----|-----|-----|-----|-----|------|-----|-----|-----|-----|-----|-----|-----|-----|-----|-----|-----|------|-----|-----|
| MedianSalePrice | 365  | 411 | 392 | 400 | 380 | 428 | 395 | 423 | 423 | 430  | 439 | 390 | 480 | 443 | 488 | 525 | 475 | 340 | 312 | 400 | 344 | 423  | 325 | 468 | 440 | 455 | 482 | 346 | 490 | 391 | 423 | 421 | 369 | 353  | 382 | 470 |
| 3 Mo. Roll Avg  |      |     | 389 | 401 | 391 | 403 | 401 | 415 | 414 | 425  | 431 | 420 | 436 | 438 | 470 | 485 | 496 | 447 | 376 | 351 | 352 | 389  | 364 | 405 | 411 | 454 | 459 | 428 | 439 | 409 | 434 | 411 | 404 | 381  | 368 | 402 |

|           | A 16 | M   | J   | J   | A   | S   | O   | N   | D   | J 17 | F   | M   | A   | M   | J   | J   | A   | S   | O   | N   | D   | J 18 | F   | M   | A   | M   | J   | J   | A   | S   | O   | N   | D   | J 19 | F   | M   |
|-----------|------|-----|-----|-----|-----|-----|-----|-----|-----|------|-----|-----|-----|-----|-----|-----|-----|-----|-----|-----|-----|------|-----|-----|-----|-----|-----|-----|-----|-----|-----|-----|-----|------|-----|-----|
| Inventory | 193  | 184 | 193 | 187 | 174 | 173 | 147 | 143 | 113 | 123  | 149 | 163 | 181 | 203 | 211 | 210 | 207 | 188 | 183 | 153 | 125 | 133  | 156 | 157 | 173 | 169 | 171 | 173 | 179 | 180 | 161 | 139 | 108 | 127  | 159 | 160 |
| MSI       | 5    | 6   | 4   | 4   | 4   | 5   | 6   | 8   | 6   | 7    | 7   | 7   | 5   | 5   | 6   | 8   | 7   | 7   | 7   | 7   | 4   | 6    | 10  | 6   | 3   | 3   | 4   | 5   | 5   | 9   | 6   | 5   | 6   | 8    | 16  | 6   |

|                | A 16 | M  | J  | J  | A  | S  | O  | N  | D  | J 17 | F  | M  | A  | M  | J  | J  | A  | S  | O  | N  | D  | J 18 | F  | M  | A  | M  | J  | J  | A  | S  | O  | N  | D  | J 19 | F  | M  |
|----------------|------|----|----|----|----|----|----|----|----|------|----|----|----|----|----|----|----|----|----|----|----|------|----|----|----|----|----|----|----|----|----|----|----|------|----|----|
| Days On Market | 43   | 36 | 46 | 56 | 56 | 49 | 52 | 54 | 92 | 55   | 46 | 70 | 77 | 20 | 42 | 37 | 39 | 42 | 56 | 63 | 62 | 60   | 77 | 62 | 45 | 67 | 61 | 49 | 55 | 35 | 56 | 45 | 77 | 108  | 61 | 37 |
| 3 Mo. Roll Avg |      |    | 42 | 46 | 53 | 54 | 52 | 52 | 66 | 67   | 64 | 57 | 64 | 56 | 46 | 33 | 39 | 39 | 46 | 54 | 60 | 62   | 66 | 66 | 61 | 58 | 58 | 59 | 55 | 46 | 49 | 45 | 59 | 77   | 82 | 69 |

|                 | A 16 | M   | J   | J   | A   | S   | O   | N   | D   | J 17 | F   | M   | A   | M   | J   | J   | A   | S   | O   | N   | D   | J 18 | F   | M   | A   | M   | J   | J   | A   | S   | O   | N   | D   | J 19 | F   | M   |
|-----------------|------|-----|-----|-----|-----|-----|-----|-----|-----|------|-----|-----|-----|-----|-----|-----|-----|-----|-----|-----|-----|------|-----|-----|-----|-----|-----|-----|-----|-----|-----|-----|-----|------|-----|-----|
| Price per Sq Ft | 193  | 203 | 208 | 200 | 194 | 202 | 203 | 202 | 204 | 216  | 210 | 197 | 211 | 217 | 219 | 211 | 215 | 185 | 183 | 192 | 184 | 188  | 193 | 195 | 202 | 197 | 199 | 198 | 213 | 183 | 193 | 181 | 172 | 200  | 201 | 198 |
| 3 Mo. Roll Avg  |      |     | 201 | 204 | 201 | 199 | 200 | 202 | 203 | 207  | 210 | 208 | 206 | 208 | 216 | 216 | 215 | 204 | 194 | 187 | 186 | 188  | 188 | 192 | 197 | 198 | 199 | 198 | 203 | 198 | 196 | 186 | 182 | 184  | 191 | 200 |

|                    | A 16  | M     | J     | J     | A     | S     | O     | N     | D     | J 17  | F     | M     | A     | M     | J     | J     | A     | S     | O     | N     | D     | J 18  | F     | M     | A     | M     | J     | J     | A     | S     | O     | N     | D     | J 19  | F     | M     |
|--------------------|-------|-------|-------|-------|-------|-------|-------|-------|-------|-------|-------|-------|-------|-------|-------|-------|-------|-------|-------|-------|-------|-------|-------|-------|-------|-------|-------|-------|-------|-------|-------|-------|-------|-------|-------|-------|
| Sale to List Price | 0.946 | 0.954 | 0.953 | 0.934 | 0.942 | 0.924 | 0.931 | 0.935 | 0.907 | 0.922 | 0.952 | 0.952 | 0.934 | 0.974 | 0.938 | 0.950 | 0.937 | 0.940 | 0.906 | 0.919 | 0.911 | 0.933 | 0.940 | 0.938 | 0.937 | 0.942 | 0.948 | 0.945 | 0.930 | 0.928 | 0.914 | 0.928 | 0.872 | 0.920 | 0.950 | 0.968 |
| 3 Mo. Roll Avg     |       |       | 0.951 | 0.947 | 0.943 | 0.933 | 0.932 | 0.930 | 0.924 | 0.921 | 0.927 | 0.942 | 0.946 | 0.953 | 0.949 | 0.954 | 0.942 | 0.942 | 0.928 | 0.922 | 0.912 | 0.921 | 0.928 | 0.937 | 0.938 | 0.939 | 0.942 | 0.945 | 0.941 | 0.934 | 0.924 | 0.923 | 0.905 | 0.907 | 0.914 | 0.946 |

|              | A 16 | M   | J   | J   | A   | S   | O   | N   | D   | J 17 | F   | M   | A   | M   | J   | J   | A   | S   | O   | N   | D   | J 18 | F   | M   | A   | M   | J   | J   | A   | S   | O   | N   | D   | J 19 | F   | M   |
|--------------|------|-----|-----|-----|-----|-----|-----|-----|-----|------|-----|-----|-----|-----|-----|-----|-----|-----|-----|-----|-----|------|-----|-----|-----|-----|-----|-----|-----|-----|-----|-----|-----|------|-----|-----|
| New Listings | 90   | 75  | 87  | 57  | 42  | 43  | 48  | 49  | 18  | 54   | 78  | 88  | 75  | 102 | 74  | 64  | 60  | 43  | 68  | 33  | 19  | 54   | 65  | 92  | 79  | 73  | 82  | 72  | 58  | 63  | 50  | 28  | 24  | 69   | 78  | 87  |
| Inventory    | 193  | 184 | 193 | 187 | 174 | 173 | 147 | 143 | 113 | 123  | 149 | 163 | 181 | 203 | 211 | 210 | 207 | 188 | 183 | 153 | 125 | 133  | 156 | 157 | 173 | 169 | 171 | 173 | 179 | 180 | 161 | 139 | 108 | 127  | 159 | 160 |
| Sales        | 41   | 32  | 45  | 47  | 49  | 33  | 23  | 18  | 19  | 18   | 20  | 23  | 37  | 40  | 38  | 27  | 30  | 27  | 27  | 23  | 28  | 21   | 16  | 25  | 50  | 49  | 44  | 34  | 35  | 21  | 25  | 28  | 19  | 16   | 10  | 27  |

| (000's)        | A 16 | M   | J   | J   | A   | S   | O   | N   | D   | J 17 | F   | M   | A   | M   | J   | J   | A   | S   | O   | N   | D   | J 18 | F   | M   | A   | M   | J   | J   | A   | S   | O   | N   | D   | J 19 | F   | M   |
|----------------|------|-----|-----|-----|-----|-----|-----|-----|-----|------|-----|-----|-----|-----|-----|-----|-----|-----|-----|-----|-----|------|-----|-----|-----|-----|-----|-----|-----|-----|-----|-----|-----|------|-----|-----|
| Avg Sale Price | 466  | 464 | 443 | 456 | 421 | 409 | 469 | 469 | 491 | 528  | 532 | 402 | 540 | 467 | 520 | 559 | 498 | 395 | 367 | 399 | 469 | 473  | 448 | 476 | 462 | 497 | 539 | 447 | 525 | 427 | 439 | 460 | 417 | 392  | 400 | 502 |
| 3 Mo. Roll Avg |      |     | 458 | 454 | 440 | 429 | 433 | 449 | 476 | 496  | 517 | 487 | 491 | 470 | 509 | 515 | 526 | 484 | 420 | 387 | 412 | 447  | 463 | 466 | 462 | 478 | 499 | 494 | 503 | 466 | 464 | 442 | 439 | 423  | 403 | 432 |